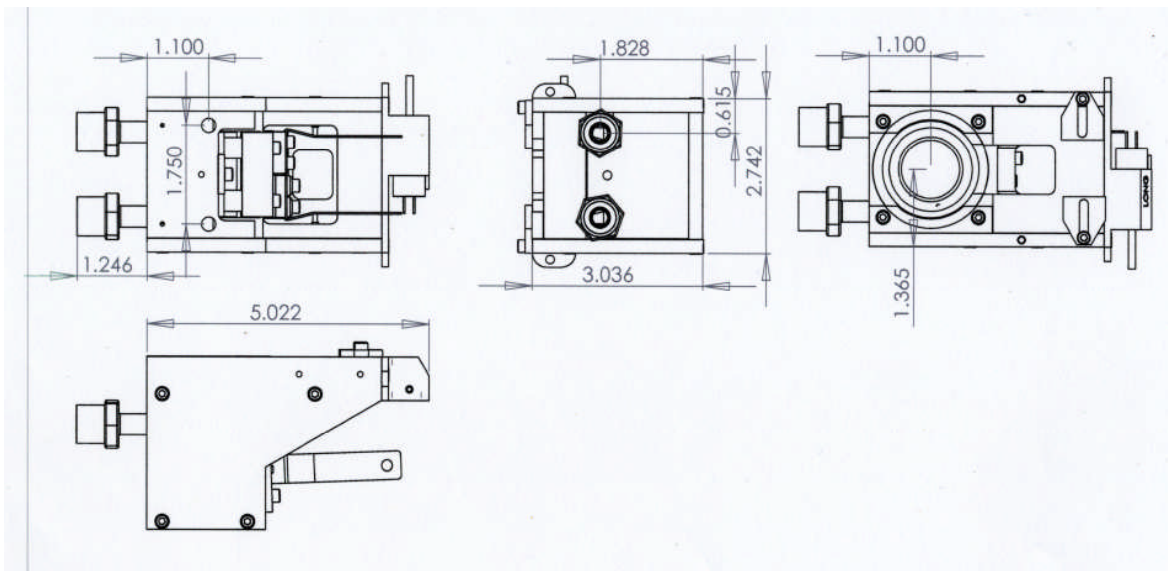


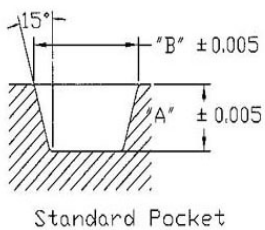
EB-1 Specifications

<u><i>Electron Beam Deflection:</i></u>	<u><i>270°</i></u>
<u><i>Power Rating:</i></u>	<u><i>6kW</i></u>
<u><i>Maximum High Voltage:</i></u>	<u><i>10kV</i></u>
<u><i>High Voltage Range:</i></u>	<u><i>5kV to 10kV</i></u>
<u><i>Lateral Coil Resistance:</i></u>	<u><i>3.0 Ohm</i></u>
<u><i>Sweep, Lateral Coil:</i></u>	<u><i>+/- 1 Amp</i></u>
<u><i>Longitudinal Coil Resistance:</i></u>	<u><i>4.0 Ohm</i></u>
<u><i>Sweep Longitudinal Coil :</i></u>	<u><i>+/- 1 Amp</i></u>
<u><i>Emission Current:</i></u>	<u><i>up to .7Amp@10kV</i></u>
<u><i>Filament Power:</i></u>	<i>600 Watts Maximum</i>
<u><i>Water Requirements:</i></u>	<u><i>2 gpm @ 10kW</i></u>
<i>Impute water temperature should be 60° F (15° C) @ 60 psi (4.2 kg/cm) with 3/8" (10mm) lines.</i>	
<u><i>Weight:</i></u>	<u><i>6 lbs. (2.7kg)</i></u>
<i>As delivered, less shipping carton</i>	
<u><i>Dimensions</i></u>	<u><i>3.0"(H) x 2.7"(W) x 5.0"(L)</i></u>
<i>Note: dimensions</i>	
<i>Less protrusions</i>	<u><i>76.2cm (H) x 68.5 cm (W) x 127.0 cm (L)</i></u>
<u><i>Maximum Crucible Volume:</i></u>	<u><i>15cc</i></u>

EB1 Reference Dimensions



Crucible Dimensions



<u><i>Size</i></u>	<u><i>"A"</i></u>	<u><i>"B"</i></u>	<u><i>Part Number#</i></u>
<i>4cc</i>	<i>.575</i>	<i>.885</i>	<i>3260-4</i>
<i>7cc</i>	<i>1.125</i>	<i>.500</i>	<i>3260-7</i>
<i>15cc</i>	<i>1.480</i>	<i>.970</i>	<i>3260-15</i>